



DG Odd Henning Johannessen

# Rotary i Vest

Månedsbrev for Distrikt 2250  
Nr. 8. 2019 - 20



## Inneholder bl.a.

<b>Fra guvernøren</b>	<b>2</b>
<b>Samfunnstjeneste på Akrasanden</b>	<b>3</b>
<b>Bekransning av minnesmerke</b>	<b>4</b>
<b>Covid-19 apell</b>	<b>5</b>
<b>Shelterbox Report</b>	<b>7</b>
<b>Kreativ kommunikasjon</b>	<b>21</b>
<b>Nytt nettmøte</b>	<b>22</b>

## Stort behov for Shelterboxer



## Covid-19 Appell



En humanitær katastrofe av ukjent omfang.  
Gjør en forskjell – hjelp de mest utsatte familiene, fordrevet fra eget hjem og uten mulighet for beskyttelse.

Foto: Muhammed Said Anadolli Agency via Getty Images

## Shelterbox Report



## Bekransning av minnesmerke



## Samfunnstjeneste på Akrasanden





## The Rotary Foundation.



Mange enkeltpersoner gir månedlige bidrag til The Rotay Foundation gjennom autogiro. I tillegg gir også mange klubber årlig bidrag til TRF. Dette bidrar til at Rotary blir i stand til å finansiere viktige internasjonale prosjekt der både distriktet og klubbene våre deltar aktivt. For øyeblikket er det flere klubber både i gamle Sogn og fjordane, Sotra/

Askøy og i Sør Rogaland som jobber aktivt for å få i gang viktige prosjekt i Sør Afrika, Tanzania og Cambodia gjennom Global Grants og med god støtte fra distriktets TRF-komitee.

En del av de midlene vi betaler inn til TRF får vi tilbake til distriktet, slik at vi kan bruke dem til lokale prosjekt gjennom Distrikt grants. Hvor mye penger TRF-komiteen hvert år disponerer til slike lokale prosjekt, avhenger helt av hvor mye vi har klart å samle inn gjennom bidrag fra enkeltmedlemmer og klubber. Men TRF-komiteen har i år sørget for at mange lokale prosjekt har fått nødvendig finansiering og er blitt gjennomført med gode resultat.

Årets bidrag av innsamlede midler til TRF ligger dessverre en del bak fjorårets bidrag. Kanskje ikke så rart på grunn mindre aktivitet i klubbene nå i vår på grunn av coronakrisen. Men det er jo ofte i slutten av året at klubbene betaler inn sine bidrag, så vi har enda muligheten for å rette dette opp, slik at vi sikrer godt med midler til lokale prosjekter også i framtida.

Skal vi sørge for at Rotary er en livskraftig organisasjon som har en viktig plass i lokalsamfunnet, er det viktig at vi sikrer at det er midler til å gjennomføre lokale prosjekt i klubbene. For det er gjennom aktive klubber som har gode prosjekt som betyr noe i lokalsamfunnet, at vi sørger for at Rotary som organisasjon kan være med å utgjøre en forskjell, rekruttere nye medlemmer og få oppslutning om sine saker.

Jeg vil derfor oppfordre alle klubber om å vurdere om de kan støtte opp om TRF med et bidrag nå før dette Rotary-året er slutt. Både små og store bidrag er velkomne.

*Odd Henning Johannessen  
Distrikts guvernør 2250*





Bjørn Rismyhr

## Karmøy Vest Rotary klubb gjør samfunnstjeneste på Åkrasanden

*Karmøy Av Bjørn Rismyhr, AG3 D-2250*

Som innflytter til Karmøy så jeg fort at øya har mye fint å by på av naturopplevelser, blant annet en flott sandstrand i Åkrehamn som heter Åkrasanden. Strandsanden er hvit og vannet er klart. Og mulighetene for å bade er flotte, dog forutsatt at du tåler sjøvannets temperatur. For det er kaldt p.g.a kort vei ut til storhavet.



Åkrasanden har allerede i flere år hatt det anerkjente miljømerket Blått Flagg.

Flagget er heist også i år. Blått flagg er en eksklusiv internasjonal miljøsertifisering for strender og marinaer.

Det har derfor vært naturlig for rotaryklubben på Åkra, Karmøy Vest Rotary klubb, å bidra til å gjøre Åkrasanden til et flott turområde for befolkningen. Klubben bruker derfor flere kveldsmøter på sommeren til å holde strandområder rene. I tillegg har klubben satt opp fem benker langs en flott kultur - og natursti som går langs strandlinjen fra Åkrehamn til Ferkingstad.



Så er du i området, ta en tur til Åkrasanden! Gå en tur langs stien, nyt synet av de fine strendene og ta deg en hvil på en benk med logoen til Karmøy Vest Rotary klubb. Og ta gjerne også av deg skoene og vass litt ut i vannet. Da våkner du fort til live om du er trøtt, men bena blir rene og varme etterpå.

Vær velkommen! Karmøy og Åkrasanden venter! Og når Coronaperioden er over, hvorfor ikke besøke møtet i Karmøy Vest Rotary klubb?  
**Velkommen til dine rotaryvenner på Åkra!**



Blått flagg er en eksklusiv internasjonal miljøsertifisering for strender og marinaer



*Bjørn Rismyhr, AG3 fra Karmøy Vest Rk, tar seg en hvil på Rotarybenken.*

## Bekransning av minnesmerke i Åkrehamn

Jakob Nilsen – Karmøy Vest Rotary Klubb

Året 2020 er for lengst blitt det store unntaksåret både ute i den store verden og her hjemme på vår lokale arena. Alle sammen er vi denne våren blitt utfordret til å tenke alternativt når faste rutineoppdrag skal utføres.

Et av de faste oppdragene for Karmøy Vest Rotary Klubb, er at vi sammen med Vest Karmøy Sjømannsforening i en årrekke har besørgt bekransning av minnesmerket ved gamle Åkra Kirke.

Minnesmerket som ble reist i begynnelsen på 1970 tallet av Åkra Fiskarkvinnelag fungerer som minnesmerke over alle dem som opp gjennom årene er blitt borte på havet. Hvert år blir minnesmerket bekranset to ganger; på 17.mai og til Allehelgensdag. Etter at Fiskarkvinnelaget la ned sin virksomhet har Rotary og Sjømannsforeningen hatt ansvaret.



Fra venstre Jan Fagervik og Jakob Nilsen fra Karmøy Vest Rotary Klubb.

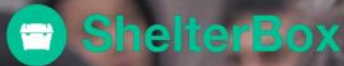


Bekransningen på Allehelgensdag foretas etter en egen minnegudstjeneste som avholdes i den gamle kirka om kvelden.

Bekransningen om ettermiddagen på 17.mai er tradisjonelt blitt utført med fast deltagelse av musikkorpset Havtonar og en person til å holde en kort minnetale før kransen legges ned. Sereomonien samler vanligvis 60-70 personer.

Dette året måtte vi gjøre det annerledes. For mange som bor på våre kanter, og som har opplevd at noen av deres kjære er blitt borte på havet, er det spesielt viktig at minnesmerket blir jevnlig bekranset. Det var derfor ikke noe alternativ å kutte ut bekransningen. Løsningen ble en enkel sak med noen få deltakere og ett minutt stillhet.

## Fra RI og D2250



# Covid-19 Appell

En humanitær katastrofe av ukjent omfang.

Gjør en forskjell – hjelp de mest utsatte familiene, fordrevet fra eget hjem og uten mulighet for beskyttelse.

Foto: Muhammed Said/Anadolu Agency via Getty Images

### Sammen forvandler vi fortvilelse til håp

ShelterBox og Rotary International er offisielle "Project Partners in Disaster Relief".

Takket være partnerskapet har familier verden over fått mulighet for at gjenoppbygge tilværelsen etter at katastrofer har ødelagt deres hjem.

Sammen yter Rotary og ShelterBox nødhjelp i den globale bekjempelsen af Covid-19.

### Rett hjelp, på rett tidspunkt

Husly har stor betydning for å forebygge og bekjempe pandemien.

I tett befolkede områder og flyktningleirene har familiene behov for å opprettholde avstand samt mulighet for å isolere de mest sårbare.

ShelterBox arbeider for å bedre forholdene i de verst stilte katastrofeområdene og yter nødhjelp i kampen mot Covid-19 sammen med Rotary og andre internasjonale hjelpeorganisasjoner.

**NÅ appellerer vi til DEG og DIN Rotary klubb – La oss sammen støtte de mest utsatte i pandemien.**

### KLUBB DONASJON Å 6.000 KRONER (NOK) ÅRLIG

Klubben ønsker å støtte ShelterBox med en årlig donasjon, første gang i 2020.

Send e-mail til [donasjon@shelterboxnorway.no](mailto:donasjon@shelterboxnorway.no)

### KLUBB ENGANGS BELØP

Klubben ønsker å støtte med et engangs beløp.

Overfør beløpet direkte til ShelterBox Norway bankkonto 3201 62 12767

Merk innbetalingen "Covid-19"

### PRIVAT DONASJON

Du kan sende din donasjon på Vipps nr 105692 eller bankkonto 3201 62 12767



## 6.000 kroner

Kan sikre en familie en komplett ShelterBox med nødhjelp, eller hjelpe flere familier med ShelterKit til gjenoppbygging av deres ødelagte hjem.



På forhånd takk!

[www.shelterboxnorway.no](http://www.shelterboxnorway.no)  
Følg oss også på Facebook

ShelterBox and Rotary International are project partners in disaster relief.  
ShelterBox is a charity independent of Rotary International and the Rotary Foundation





Piotr Wygnanczuk  
RI Director 2018-20



Virpi Honkala  
RI Director 2020-22

Dear Fellow Rotarians,

We hope you, your family, friends and community are safe and healthy.

As Rotarians we know you will all be proactively supporting your communities in these unprecedented times. It is heartening to see the speed with which Rotary Clubs have adopted and adapted projects. As we know only too well our world is connected and we are seeing this more than ever, right now. Similarly, we must remember that this virus can spread from anywhere in the world. While this health danger is impacting all of us, people living in refugee camps or makeshift settlements are particularly vulnerable.

ShelterBox, Rotary International's Project Partner for disaster relief, is working hard to provide families with shelter and other vital aid around the world in regions that are most susceptible to, and least prepared for, the COVID-19 pandemic.

The pandemic is a complex global challenge, requiring us all to work together and adapt our ways of working. As emergency shelter experts, ShelterBox has a crucial role to play in the global fight against this virus. Emergency shelter is vital for moving people from overcrowded camps and collective centres to a more private space. Alongside healthcare, providing high quality tents and shelter kits for families to isolate in and soap to keep hands clean will help them stay as healthy as possible.

There are of course many organisations and causes that need support at this time, we urge you to consider ShelterBox, Rotary's partner in disaster relief, as one for you, your Rotary District and Club to support.

Piotr Wygnanczuk

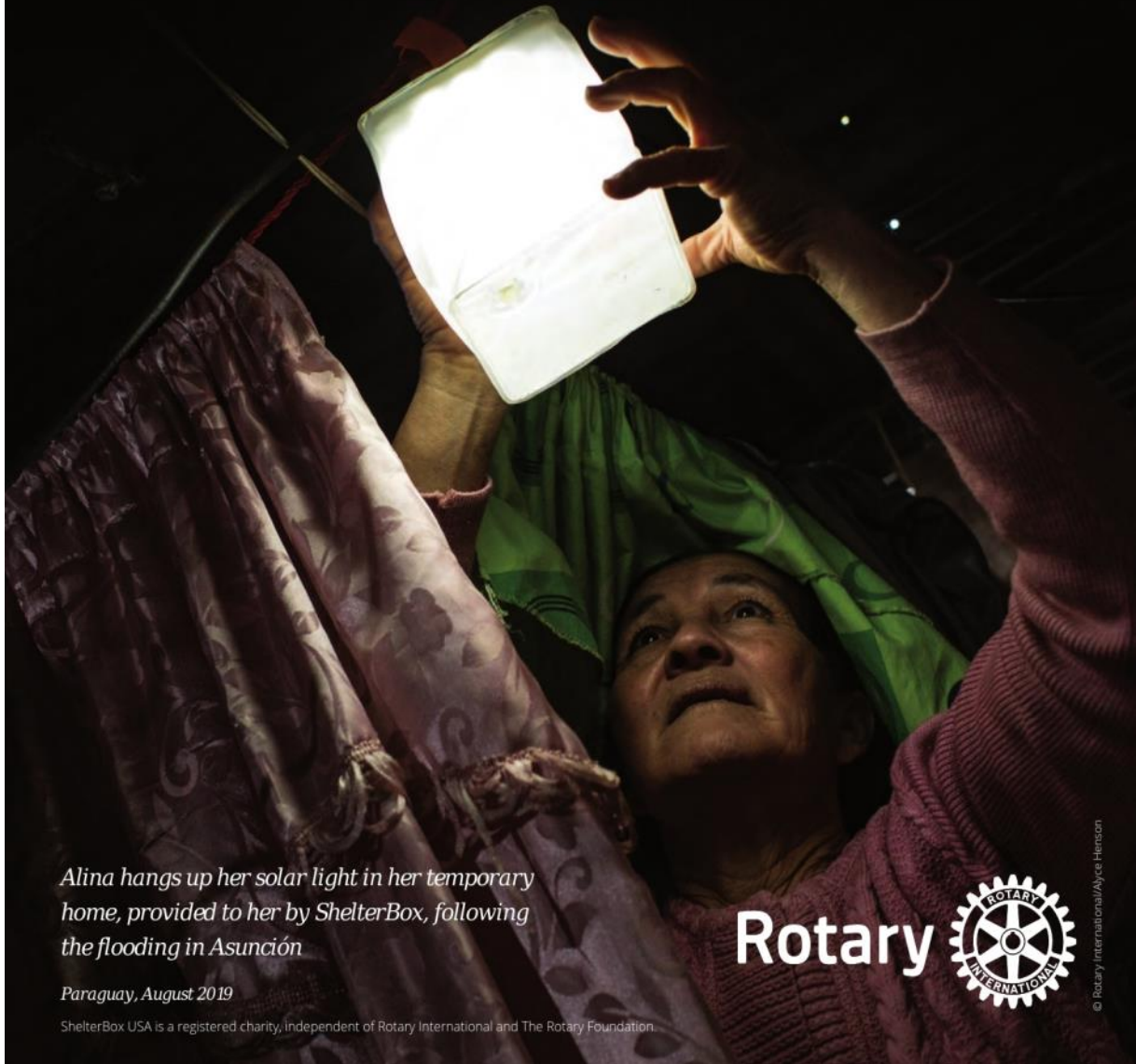
Virpi Honkala

ShelterBox and Rotary International are project partners in disaster relief.  
ShelterBox is a charity independent of Rotary International and the Rotary Foundation.





## 2019 PARTNERSHIP IMPACT REPORT



*Alina hangs up her solar light in her temporary home, provided to her by ShelterBox, following the flooding in Asunción*

*Paraguay, August 2019*

ShelterBox USA is a registered charity, independent of Rotary International and The Rotary Foundation.



© Rotary International/Alyce Henson

# Thank you

TOGETHER WITH ROTARY WE HAVE SUPPORTED  
OVER 1.5 MILLION PEOPLE IN 100 COUNTRIES



2019 has been another incredibly busy year with the numbers of displaced people at the highest ever recorded. Now more than ever, our partnership with Rotary International is fundamental to what we do.

Reaching communities with vital aid is only made possible with help from our partners, volunteers and global network of supporters. We have created this report to say thank you and show how this partnership of action has helped so many families rebuild their lives following disaster.



## 2019 IN FIGURES



\*Numbers as of 12 Dec 2019 - based on completed responses from 1 January 2019 to date, and anticipated responses to 31 December 2019.





## DEPLOYMENT FOCUS: PHILIPPINES

The Philippines is hit by devastating natural disasters every year, and since 2004 ShelterBox has responded 27 times, more than in any other country.

Taking this into account, ShelterBox Operations Philippines was established as an NGO in 2017, allowing us to operate more efficiently in country.

It all started at a regular club meeting of the Rotary Club of Cebu back in 2013, when Rotarian Stephen Castillo was so inspired by the ShelterBox demonstration, he decided to generously donate use of his company's warehouse space. Shelter aid for 10,000 families has since passed through these warehouses, showing the key impact of this global partnership.

We now hold stock in our own warehouses to support a further 3,000 households, including tents, shelter kits, and other aid items such as water carriers, mosquito nets, solar lights and corrugated iron sheets for roofing.

In January 2019, a ShelterBox team was deployed once again to the Philippines in response to the devastation caused by Tropical Storm Usman in December 2018. More than a million people across 15 provinces were affected. Upon arrival, the team met



with Stephen Castillo who was already well prepared, having set up meetings with Rotary clubs in the worst affected areas. Thanks to Rotary's access to contacts in the highest levels of government, within 24 hours of arrival our team was meeting with the Mayor of Lope De Vega municipality and discussing plans for distribution. Despite initial apprehensions about the use of shelter aid in forms other than of wood or concrete, we were able to provide reassurance about the impact of our aid with the post-distribution monitoring report from our response to Tropical Storm Ompong only a few months before.

In just over one month, with support from Catarman and Calbayog Rotary Clubs, we completed distributions of ShelterKits and accompanying aid items to 2,214 families in the Philippines. Our partnership with Rotary has been instrumental to our continued operations in the Philippines - Rotary have assisted us on every single deployment since 2004. Year over year we have been able to build on the connections and expertise provided by Rotary to facilitate a more rapid and efficient response each time disaster hits.

SINCE 2004 WE HAVE RESPONDED 27 TIMES IN THE PHILIPPINES TO:



3

Earthquakes



2

Floods



20

Cyclones



2

Conflicts

ShelterBoxUSA.org

3

FROM THE FIELD:

## SHELTERBOX AND ROTARY WORK TOGETHER IN MALAWI

Cyclone Idai made landfall in March, causing widespread chaos along the South Eastern coast of Africa. 100,000 homes were destroyed or damaged, with at least one million acres of crops ruined. The severe damage to infrastructure and land meant communities were particularly at risk of experiencing poverty and food insecurity.

A ShelterBox team was deployed, and upon arrival met with District 9210's Governor Hutch Mthinda in Lilongwe. Transferring south to Blantyre, conversations continued with President Eric Chinkanda, of the Rotary Club of Limbe, which was raising funds to carry out a food distribution. We explored ways to support them by connecting them with relevant government and humanitarian actors. They were able to move forward quickly with the delivery of food aid, complementing the emergency ShelterBox response supporting nearly 2,000 families with tarpaulins, water filters and carriers, solar lights and mosquito nets.

*"We were able to stay with each other without any problems because we were coming from the very same village. We were staying like one big family. No matter what problems we had, we would easily solve it as one big family."*

Members of the community of Mwalija

“

*On behalf of District 9210, I would like to thank ShelterBox for coming to our rescue. We value your relief work during the Cyclone Disaster and we trust that you will continue to partner with us in future disaster response programs in our district.*

- DG Hutch Mthinda



### MALAWI RESPONSE

**86,980**

Malawians displaced

**15**

affected districts

**2,000**

families supported with ShelterBox aid



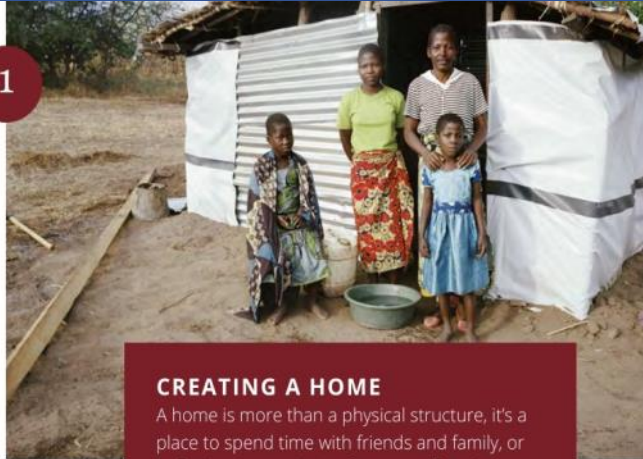
2019 PARTNERSHIP IMPACT REPORT

## THE IMPACT OF OUR AID

Shelter is more than just tents and tarps. It's a process of recovery, a way of keeping communities and families together and allowing them the space to focus on the future.

To fully understand the impact of our response, we sent teams back to Malawi to listen to the people we supported tell their stories. We found that shelter helped to provide or enhance these four pathways to recovery:

1



### CREATING A HOME

A home is more than a physical structure, it's a place to spend time with friends and family, or to find privacy and time for yourself. A place to reconnect and start thinking about the future.



2

### REBUILDING AS A COMMUNITY

Shelter connects people to the land and keeps communities together.

*Communities help recovery by providing essential physical, financial and emotional support.*



3

### RETURNING TO WORK

Once critical shelter needs are satisfied, the community can return to their farms and work. Returning to work represents independence and the ability for people to take back control of their lives.

4

### SKILLS AND KNOWLEDGE

Building a safe and durable shelter requires skills and knowledge. Some draw from their own experiences, while others require training provided by us. These new skills can then be shared with the community.



All photos ©SJan Dawey

[ShelterBoxUSA.org](http://ShelterBoxUSA.org)



## ROTARY INTERNATIONAL CONVENTION

June saw Hamburg host the 2019 Rotary International Convention. The ShelterBox booths were visited by Rotary friends old and new, including the District Governor of Malawi, Hutch Mthinda, a key contact from our recent response in Malawi.



We also launched the new Rotary Action Toolkit, which was developed to provide Rotarians with all the resources needed to support the partnership with ShelterBox, through activities to raise awareness and funds, to how they can offer practical assistance in the field.

Every year we look forward to the convention as a chance to reconnect face to face with our international teams, many of whom are Rotarians. The success of this year's event would not have been possible without the dedicated support and commitment of the ShelterBox team in Germany so a big thank you to them, and to everyone who is a part of our Global Network.



## RENEWAL OF THE PARTNERSHIP AGREEMENT

**In May we celebrated the renewal of the partnership agreement, which will see ShelterBox continue as Rotary International's Project Partner in Disaster Relief for another three years.**

First adopted as a millennium project by the Rotary Club of Helston-Lizard in 2000, the support of Rotary members and clubs around the world saw ShelterBox first become Rotary's Project Partner in Disaster Relief in 2012. Since then, Rotarians around the world have raised over \$70 million for ShelterBox and have helped transform ShelterBox into an internationally recognized, independent disaster relief organization.

The partnership however means so much more to us than just financial support. Rotary clubs worldwide offer valuable, practical assistance to help us reach more families fleeing disaster or conflict with 90% of our natural disaster responses

benefitting from Rotary assistance or logistical support. Around 1,000 Rotary members are also directly involved in ShelterBox as volunteers, staff or response team members, and our international teams, which allow us to connect with our supporters all around the world. We are an alliance in the true sense of the word.

*“ This partnership has helped ShelterBox become who we are today. Our global network of 15 ShelterBox affiliates, who raise funds and awareness worldwide, evolved from Rotary relationships.*

*Caroline White, interim Chief Executive at ShelterBox*



### ROTARIANS IN FOCUS

Congratulations to the Rotary Club of Saucon in Pennsylvania who hosted another great event this year in support of ShelterBox. Their 2019 event was a Dueling Pianos fundraiser and exceeded \$30,000 in support of ShelterBox's work.





In October, Hazera received a shelter tool kit and training to help her rebuild her home which was damaged by floods.



SUPPORTED

**745**

households with



tools



ShelterKits

## DEPLOYMENT FOCUS: BANGLADESH

**In the first six months of 2019, Bangladesh experienced unusually heavy monsoon rainfall which triggered widespread flooding, particularly in the North West districts.**

Water levels were at the highest seen for 100 years. 7.6 million people were reported to be affected with almost 600,000 homes damaged or completely destroyed. When both Rotary and Bangladesh Red Crescent Society (BDRCS) reached out to ShelterBox at the end of July, with weather conditions predicted to worsen over the following weeks, we made the decision to send a ShelterBox assessment team to the worst affected Kurigram District, and subsequently completed four successful distributions.

It was thanks to Rotary that we were able to access the worst affected areas. Our contacts at the Rotary Club of Rangpur, Rotary Club of Dhaka Kawran Bazar and the Rotary Club of Dhaka North West arranged official invitations and organized permits; they also guided us through the process of obtaining permission to operate and import into Bangladesh.

With support from Rotary, 745 households received tarpaulins and shelter tool kits, allowing families to create a safe space to shelter from the continuing rains.

*Alongside distributions, ShelterBox conducted training sessions with community representatives to ensure proper use of the aid provided.*

[ShelterBoxUSA.org](http://ShelterBoxUSA.org)

7

## IMAGES FROM THE FIELD : PARAGUAY



© Rotary International/Alyce Henson



© Rotary International/Alyce Henson



© Rotary International/Alyce Henson

*Paraguay experienced abnormally heavy rainfall between March and May, which led to widespread flooding and the river Paraguay overflowing in the capital city of Asunción. Nearly 20,000 people were displaced from their homes and communities.*

▲ Ned Morris, a member of the Rotary Club of Walla Walla, Washington, USA, is part of a ShelterBox response team sent to assess the needs of people who were displaced by the floods.

◀ ShelterBox Response Team member and Rotarian Ned Morris and Joel Duarte from Habitat for Humanity Paraguay prepare for a community focus group and needs assessment in Asunción.

8

2019 PARTNERSHIP IMPACT REPORT



© Rotary International/Alyce Henson



© Rotary International/Alyce Henson



© Rotary International/Alyce Henson



© Rotary International/Alyce Henson

▲ Gregoria and her daughter outside their temporary home with a mosquito net that they were provided by ShelterBox.



▼ Adolfo and his son Miguel used their shelter kit to construct a new temporary home. Adolfo's home had been severely damaged by the extreme flooding.

© Alex Youlten, ShelterBox



**Top Images, Left to Right:**

▲ Rotaractor Dulce Maria Uedo Burguez assists in carrying out a stock take and prepares the aid for the next round of distributions.

Members of Rotaract assist in stock take and prepare for distributions.

Liz Carolina's home in Asunción was flooded. Her family was one of 3000 who received aid items from ShelterBox including shelter kits, solar lights, mosquito nets & thermal blankets.

◀ Rotaractor Mariana Santiago conducting a Post Distribution Monitoring Survey with Cecelia and her granddaughter Tania. With assistance from Rotaract, these surveys were carried out by the ShelterBox Monitoring & Evaluation team to learn from the community about the impact of the aid.

**AID PROVIDED TO 2,925 FAMILIES IN ASUNCIÓN**



shelter kits



solar lights



mosquito nets



blankets

ShelterBoxUSA.org

9



## WE DO THE RIGHT THING

**Our purpose is simple - we provide emergency shelter to families who have lost their home to conflict or disaster, giving them the tools and training they need to support them in their own recovery.**

In 2018, over 88 million people were forced to flee their homes as a result of conflict or natural disaster, and the need for emergency shelter is ever growing. We recognize that we are unable to help everyone, so we prioritize the most vulnerable, those who might not otherwise receive aid, and focus on doing the right thing for the communities that we do support.

Sometimes this involves making some tough decisions. To help make these decisions we have developed a set of criteria which examines whether our aid would be culturally and contextually appropriate, and whether the scale of people affected means they cannot more quickly and easily be supported by the local community or other local organizations.

Martin Strutton, Monitoring & Evaluation Coordinator, conducting an exit interview with a woman in Malawi who had just received ShelterBox aid. The team wanted to establish how communities had felt about the distribution process, and how appropriate the support was for people on an individual level.

**MAKING THE DIFFICULT DECISION...** In May, we deployed an assessment team to The Comoros Islands, after Tropical Cyclone Kenneth hit the previous month. Entire villages had been destroyed with estimates of at least 14,500 people displaced. Following a call from the Comorian Government for International assistance, we got in touch with our Rotary contacts on the ground who were able to offer practical support to our team including translators, drivers and local introductions.

*The team observed a strong feeling of community support and impressive early self-recovery, meaning an emergency shelter response was not felt to be necessary.*





▲ ShelterBox Head of Operations, Alf Evans with Immediate Past RI President Barry Rassin in The Bahamas

Months later, Hurricane Dorian made landfall in The Bahamas, causing widespread destruction, and impacting around 76,000 people, with the islands of Abaco and Grand Bahama the worst affected.

We deployed a ShelterBox assessment team and worked closely with past RI President, Barry Rassin, and other Rotary groups, in order to understand the needs of people requiring support. Assessments showed that people who had been evacuated from affected areas were unable to return due to limited infrastructure and services.

Evacuees had been living in official shelters on other islands, staying with host families, and/or receiving support from other organisations. Ultimately the team could not identify any unmet need in emergency shelter and felt that there was no role for ShelterBox to play at that time.

*In circumstances such as these, doing the right thing means making the difficult decision not to respond.*

Ultimately this means we have the available resources to respond to conflicts and disasters in Syria, Ethiopia, Philippines, Lake Chad and Somaliland, providing emergency shelter for vulnerable families who wouldn't otherwise receive the support they need.

[ShelterBoxUSA.org](http://ShelterBoxUSA.org)

11

## ROTARY UN DAY



ShelterBox USA President Kerri Murray at Rotary UN Day sharing about the massive global displacement of families and how ShelterBox is on the front lines providing emergency shelter and relief.



Ace Robin with RI General Secretary, John Hewko (left) and RI President, Mark Maloney (right).

Ace Robin from the Rotary Club of Mataram, Indonesia was honored at the Rotary UN Day for her outstanding work with ShelterBox, supporting families who lost their homes to the devastating earthquake that hit Lombok in 2018.

“

*I was in the house by myself when the earthquake hit. For the first time in my life, I thought everything would finish. Working with ShelterBox taught us a lot - they showed us how to build a shelter and select families to help. It also gave us a chance to show what Rotary is to local people.*

- Ace Robin

# SYRIA: THE FIGHT FOR HOPE



SYRIA

THANKS TO SUPPORT FROM ROTARY MEMBERS AROUND  
OVER 250,000 PEOPLE IN AND AROUND SYRIA SINCE WE  
AND MOST SUSTAINED RESPONSE IN OUR 19-YEAR HIS

Reaction to peaceful  
pro-democracy protests,  
inspired by the 'Arab  
spring', leads to violence  
that develops into civil war

- Syrian government uses chemical weapons against rebel positions in Ghouta
- UN begins process of destroying chemical weapons stocks, with permission from the Syrian government

- Syrian government forces attack Homs and other cities
- Opposition group the Free Syrian Army seizes Aleppo

**The ongoing conflict in Syria has been long and complicated. It has seen over five million people forced to leave the country and more than six million displaced within Syria.**

Families have fled bombs and destruction, leaving behind their homes with nothing but the clothes they are wearing. The colossal need for humanitarian aid has grown larger with each year the conflict persists.



There is an additional threat at this time of year as winter further endangers families who have fled for their lives. Living in internal displacement camps across the country, people are not prepared for the harsh freezing temperatures of the Syrian winter. Our partner ReliefAid spoke to Mohamed during an assessment visit to a displacement camp before delivering aid. He told us about his life in the camp.

*“ Before we were displaced, I had a beautiful house and farmland where I had wheat and sheep. My house was bombed and I rebuilt it. Then the planes returned and bombed us again and we could not stay. Now we live in a tent and with the rain and cold, the situation is worse. Winter is hard.*

- Mohamed

Fortunately, ShelterBox were able to supply Mohamed with some essential items to protect his family from the cold including mattresses, blankets and children's clothing sets in time for the cold winter ahead.



2011

2012

2013



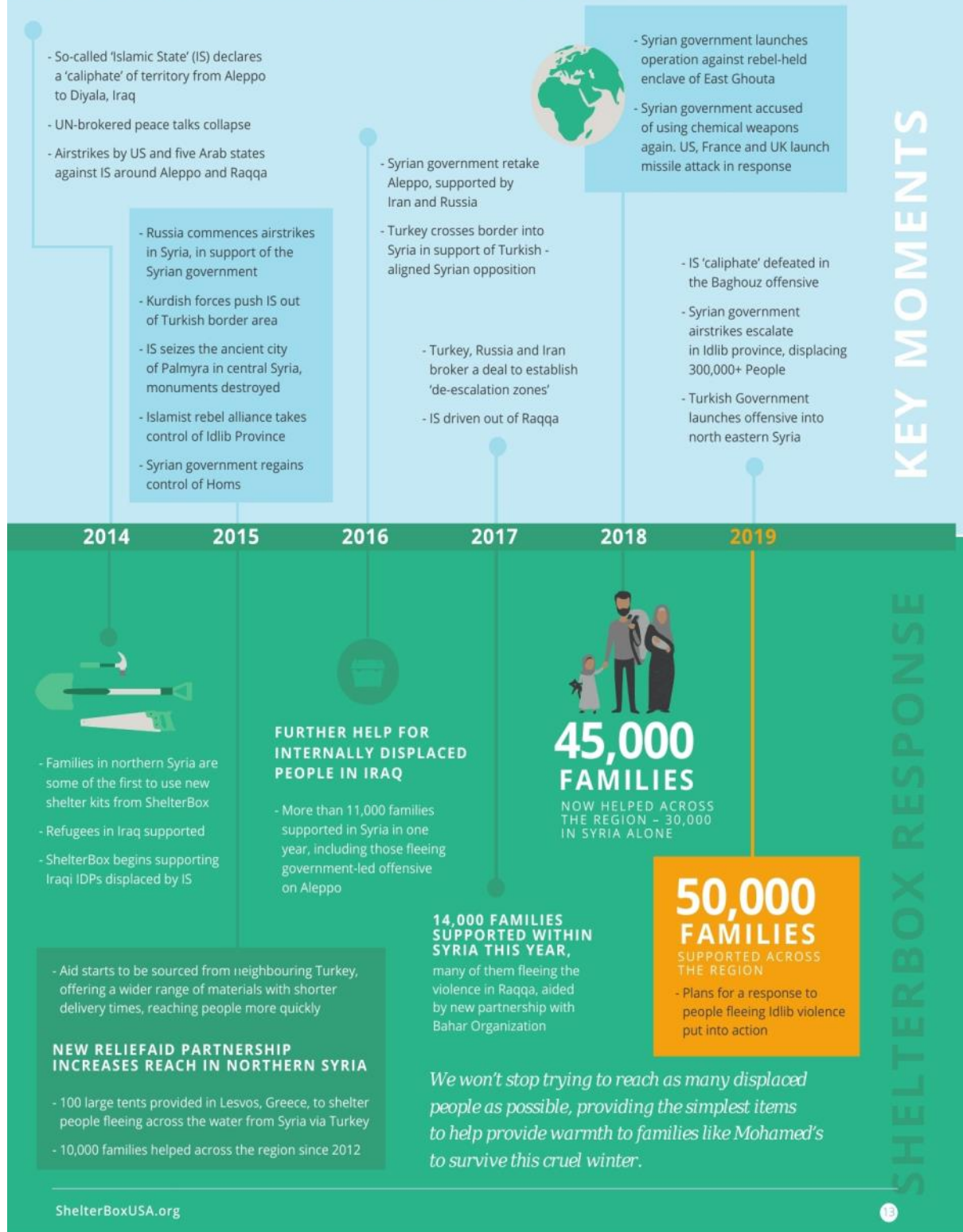
**100**  
SYRIAN REFUGEE  
FAMILIES  
HELPED IN JORDAN

- Displaced people supported in northern Syria
- A response starts to support Syrian refugees in Iraq

PARTNERSHIP WITH HAND  
IN HAND FOR SYRIA FORMED,  
HELPING PEOPLE IN  
NORTHERN SYRIA.

- More than 2,000 families helped in Lebanon. ShelterBox is the only aid organisation to successfully negotiate importing tents into the country

THE WORLD AND WORKING WITH TRUSTED PARTNERS, SHELTERBOX HAS SUPPORTED THE FIRST RESPONDED TO THE CRISIS IN DECEMBER 2012. THIS MAKES IT THE LARGEST STORY. THIS TIMELINE OUTLINES KEY EVENTS FROM THE WAR AND OUR RESPONSE.



# THANK YOU

*Each year, Rotary helps us to go further,  
support more people, and access areas that would  
otherwise be impossible to reach.*

Right now, we are back in the Philippines once again, following a series of earthquakes in Mindanao province; working closely with at least five Rotary clubs across the region and with District Leadership from Districts 3860 and 3870.

And thanks to our global partnership with Rotary, we are continuing to support families that have been displaced by conflict or disaster in Syria, Ethiopia, Nigeria and Cameroon.



*Learn more about  
our work*  
**SHELTERBOXUSA.ORG**

## VOLUNTEER TODAY AT [WWW.SHELTERBOXUSA.ORG/VOLUNTEER](http://WWW.SHELTERBOXUSA.ORG/VOLUNTEER)



*Become  
an Ambassador*



*Host a  
Fundraiser*



*Serve as a  
Club Champion*



*Help spread  
the word*

ShelterBox USA is a registered charity, independent of Rotary International and The Rotary Foundation.



## Kreativ kommunikasjon

Rotarianere er fleksible! Da jeg ikke kunne logge meg inn på den virtuelle møteplattformen (ikke Zoom) for å snakke med rotarianere i Danmark, improviserte vi. Jeg ringte til Per Høyen på FaceTime, og han holdt telefonen med videooppdateringen min til laptop-kameraet slik at rotarianerne kunne se og høre meg secondhand.

Takk, Per! Og takk til Anette for å ta bildene av det improviserte oppsettet. (Du kan se henne på laptop-skjermen!)

**Mark  
Maloney**



## 14. MAI 2020 ASKØY ROTARY'S FØRSTE NETTMØTE.

President Jonas innkalte til nettmøte og vi ble 13 medlemmer totalt. Noen gikk glipp av mail i forkant. Dette ble et vellykket møte og med litt tale-disiplin fikk alle slippe til. Noe problemer med lyd etc., men det retter seg til neste møte 28.5. Neste fysiske møte blir 4.juni 2020 i Møllesalen og da med opptak nytt medlem - Brith Grane.

Jonas åpnet og tente lys for en slutt på korona og for 75 års markering av slutten på 2. verdenskrig 8. mai. 14.mai er også "Matpakkens dag" i Norge. Vi markerte også Liv som hadde gebursdag 7.mai og Bente som hadde det samme 19.april.

Eli orienterte så om klubbens TRF prosjekt, der vi sammen med Sotra Rotary Klubb og DG-2250 til koronasmittede i Kenya, samt hjem for kreftsyke i Nakuru i Kenya, til sammen har stilt opp med Kr. 52.000,-

Vi diskuterte videre forslag til komiteer fra Ink.President Terje Stevnebø. Dessuten ønsker vi å samle talentprisvinner, samt RYLA kandidat til møte i klubben 11.juni.

**Siste møte blir 18.juni med Presidenskifte og litt sommerkos før ferien.**

*Jonas*

